



Providing Quality Engineering For Our Water Resources Since 2002

Clients

All Home Builders, Land Developers, Grading Contractors, Architects, Surveyors, General Site Engineers.

Projects

New home construction, subdivision development, landscaping project, new site design.

Tasks/Milestones

Stormwater management regulations and local rules require drainage plans, erosion control plans, and in some cases cut/fill plans. Performing these designing tasks at the start of the project ensures a smooth relationship between designer/builder and grading contractor/landscaper.

Overview/Description

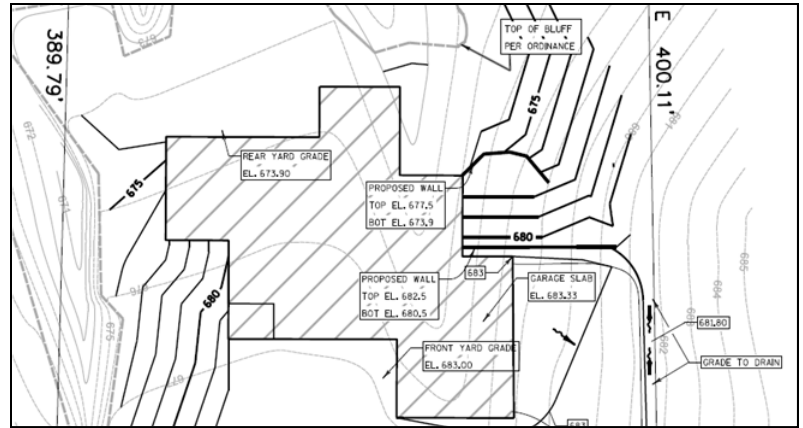
Planning for stormwater management is important not only because the community or WDNR require it, but because you can treat stormwater as an asset to a new site or redeveloped site.

Typical Problems/Challenges

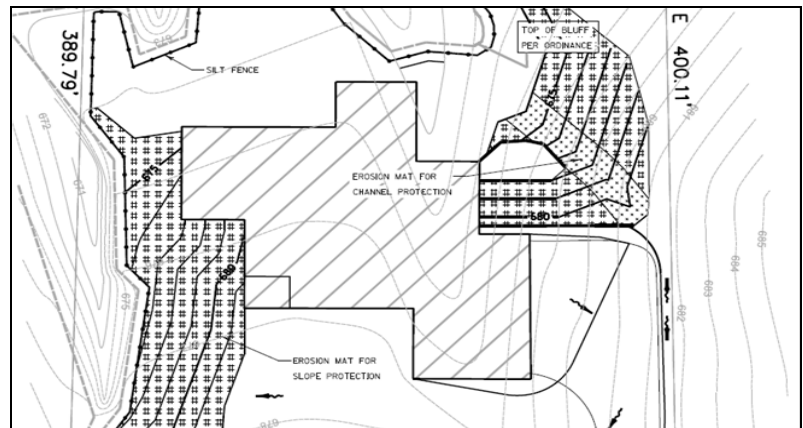
- Water in the basement
- Runoff directed at the neighbor’s property
- Flooding or ponding areas in yard during or after rain events
- Steep, hard to maintain slopes
- Erosion in high flow areas
- Driveway culverts that back up water or collect debris

Actions Addressing Challenges

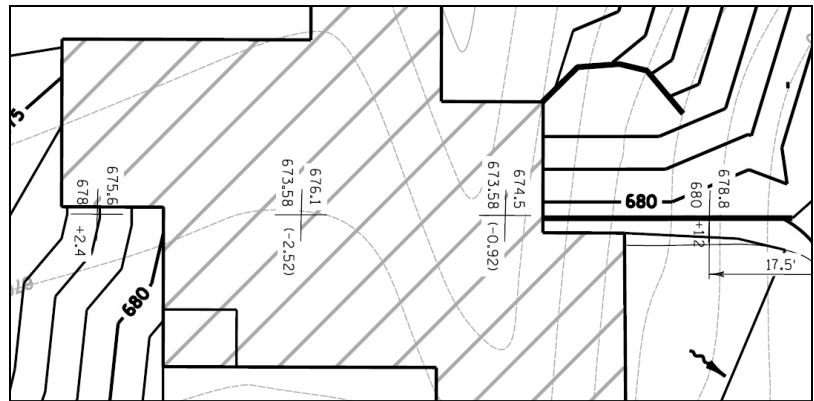
- Directing stormwater far enough away from basement, not toward neighbors.
- Use of raingardens and landscape beds to collect and treat runoff also reduces need to water gardens during the summer
- Use of Wisconsin native landscaping
- Mindfully planned grading and erosion control plans prevents ponding and erosion
- Evaluation of storm event flows ensures culverts and waterways are sized properly



Grading Plan Sloping or flat sites require creative grading approaches



Erosion Control Plan Concentrated drainage paths, higher velocities, steeper slopes and other site specifics are treated uniquely



Cut/Fill Plan When required by the community, or when a balanced site is desired

