

Providing Quality Engineering For Our Water Resources Since 2002

Client

Milwaukee Metropolitan Sewerage District (MMSD), Milwaukee, WI
 (SSE was a subconsultant to GRAEF)
 Contact: Tom Chapman, Watercourse Manager (MMSD)
 (414) 272-5100

Project

Menomonee River Stream Management Project

Overview/Description

MMSD contracted with Stormwater Solutions Engineering, LLC as a subconsultant to GRAEF for the environmental permitting of the proposed stream restoration project. The project involved design of a restoration plan for the stream bed and banks to provide better water quality and aquatic organism passage. SSE provided environmental documentation for the Water Resources and Projects Permitting (WRAPP) for the Wisconsin DNR.

Concerns/Challenges

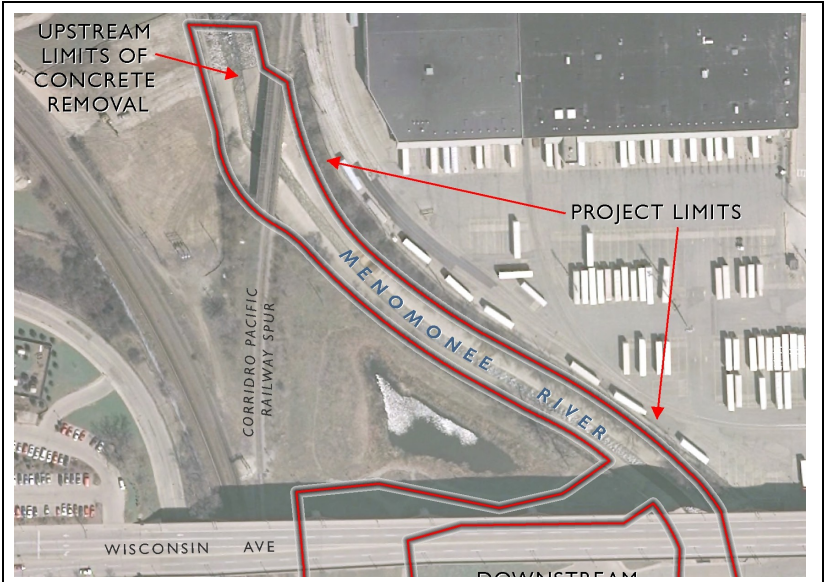
- Streams in the City were typically lined with concrete in the 1950's to move water through the system faster to lower flood elevations and "improve" maintenance concerns within the streams
- High flow and velocity in the stream as well as drop structures (vertical drops) within the stream impeded the passage of fish to upstream spawning areas and lead to poor water quality and limited use of the stream
- MMSD desired to create a more natural stream setting for safety, habitat improvement, water quality, and

Actions Addressing Challenges

- SSE prepared permitting documents to assist the design team with permitting the project through Wisconsin DNR and Army Corps of Engineers
- Project was permitted and is awaiting grant funding for removal of concrete and stabilization of stream



Existing Concrete Lined Channel at Railroad Crossing



Aerial Photo of Project Description



Existing Wetland Area of Concern for Permitting



Stormwater Solutions Engineering, LLC

100 East Sumner Street | Hartford, WI 53027

Phone: (262)673-9697 | Fax: (262)397-8426

Web: www.stormwater-solutions-engineering.com