

Providing Quality Engineering For Our Water Resources Since 2002

#### Client

Wisconsin Department of Transportation  
SE District  
(SSE was a subconsultant to MTP, LLC)  
Contact: Roberto Gutierrez, WisDOT  
(414) 548-5622

#### Project

I-94 North/South Reconstruction at the CTH G Interchange (Racine County)

#### Overview/Description

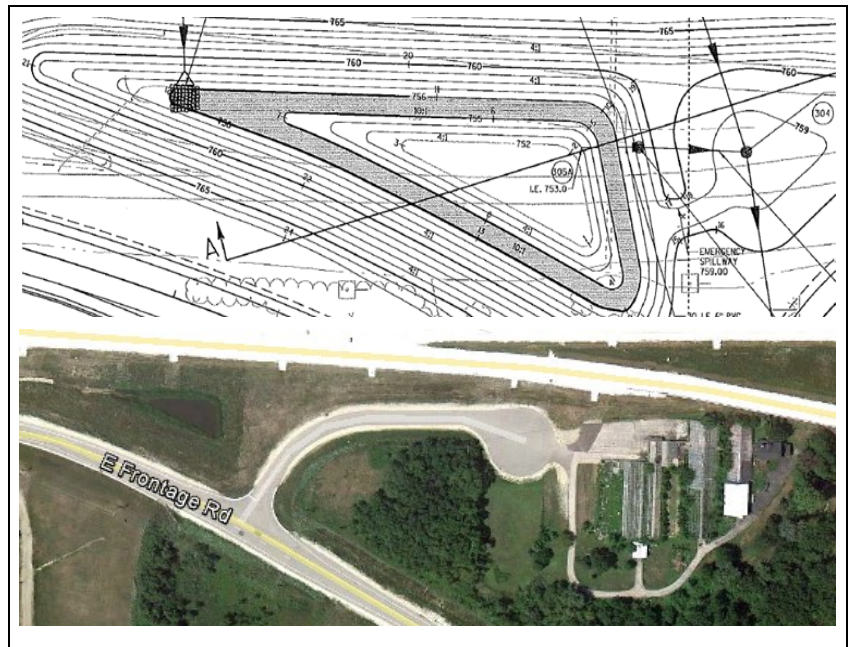
Stormwater Solutions Engineering, LLC contracted as a subconsultant to Milwaukee Transportation Partners, LLC to design stormwater detention ponds for the interchange work.

#### Concerns/Challenges

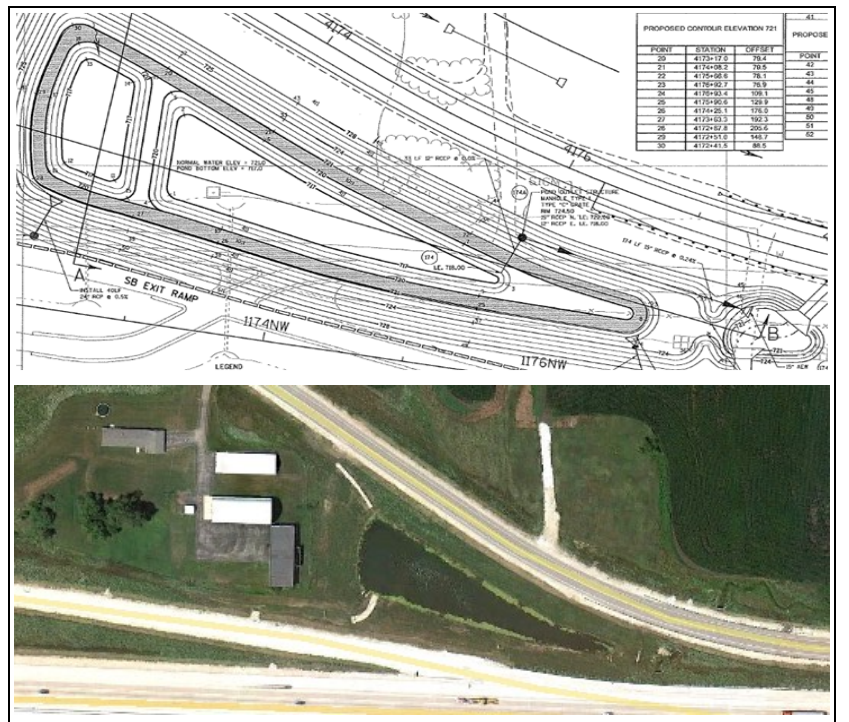
- Increase runoff quantity as a result of expanded roadway surface would could cause drainage concerns.
- Limited land space for stormwater ponds was available
- Decreased water quality as a result of the increased hard surface and increased traffic volumes.
- Proposed box culvert extension and stream restoration project by others to be accommodated

#### Actions Addressing Challenges

- Area within the ramp in-fields were used for wet detention ponds so that no land purchase for stormwater was necessary
- Two stormwater detention ponds were designed to collect and store increased runoff, providing water quality through **settling** of total suspended particles.
- Use of Wisconsin **native** landscaping within the pond safety shelves (along the water's edge) allows for filtering of stormwater as well as deters water fowl by providing a visual barrier to potential predators.



Aerial Photo and Design of SE Pond at Interchange



Aerial Photo and Design of NW Pond at Interchange



**Stormwater Solutions Engineering, LLC**

100 East Sumner Street | Hartford, WI 53027

Phone: (262)673-9697 | Fax: (262)397-8426

Web: [www.stormwater-solutions-engineering.com](http://www.stormwater-solutions-engineering.com)